

COLOURBOX.STUDIO

CBXL-RGB

CBXL-RGBW

LINEA LED Flex

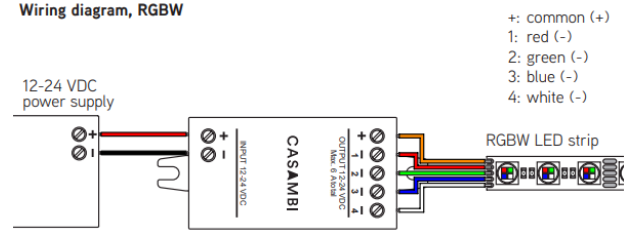
24v Drivers & Colour Control

RGB / RGBW Bluetooth Colour Controller

CASAMBI CBU-PWM4

Control Interface	Casambi app (IOS or Android)
Power	Max 144w @24v
Max Output Current	6A @24v (Over 4 channels)
Minimum Load	0A
Dimming Method	Pulse Width Modulation
Driver	Requires 24v driver to match load

Wiring diagram, RGBW



L73mm x W30mm x H18mm

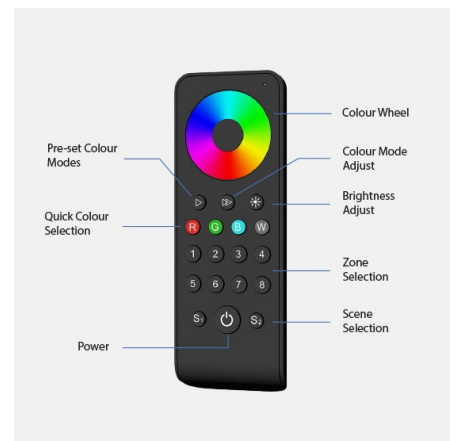
- +: common (+)
- 1: red (-)
- 2: green (-)
- 3: blue (-)
- 4: white (-)

RGB / RGBW Remote Colour Controller

RGBW-8ZC

8 Zone RGB / RGBW Control Interface

For use with PWM-4CR	
Connection	RF (2.4GHz)
Colour Control	Colour Wheel
Zones	Max 8
Scenes	Max 4
Range	30m (Open)
	12m (Indoors)



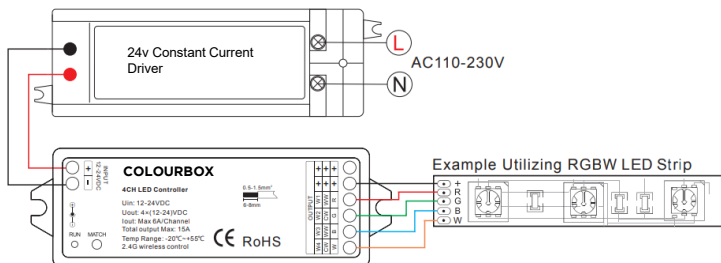
RGB / RGBW Remote Receiver

PWM 4CR

For use with RGBW-8ZC	
One unit required per zone	
Connection	RF (2.4GHz)
Power	Max 144w per channel
	Total Max 360w @24v across 4 channels
Max Output Current	6A per channel @24v
	Total Max 15A across 4 channels
Minimum Load	0A
Dimming Method	Pulse Width Modulation
Driver	Requires 24v driver to match load



L 114mm x W38mm x H20mm



Compatible LINEA LED Flexes

Multi Channel PWM Dimming

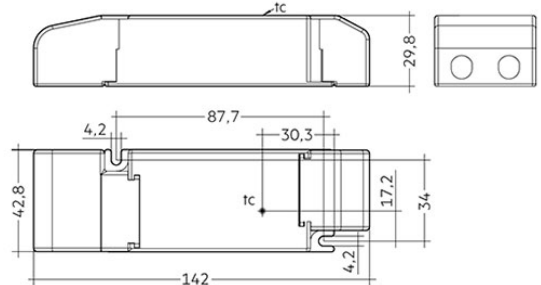
CBXL-RGB	Red/Green/Blue LED Flex
CBXL-RGBW	Red/Green/Blue/White LED Flex

24v Driver Details

35w

Power 35w (Max Load)
 Drive Current 1.46A
 Output Voltage 24v (Constant Voltage)
 Power factor 0.95
 Lifetime 50,000hrs @ TC Max 75°
 Standards EN 55015, EN 61000-3-2, EN 61000-3-3, EN 61347-1, EN 61347-2-13, EN 62384, EN 61547
 Ambient Temp Range -20° - +50°

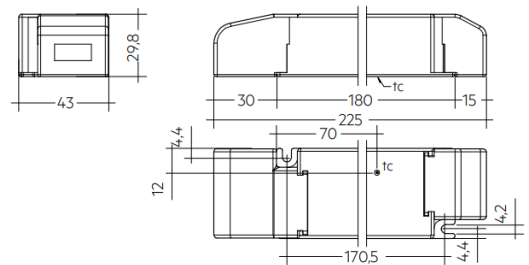
CBXL-PSU35



60w

Power 60w (Max Load)
 Drive Current 2.5A
 Output Voltage 24v (Constant Voltage)
 Power factor 0.95
 Lifetime 50,000hrs @ TC Max 75°
 Standards EN 55015, EN 61000-3-2, EN 61000-3-3, EN 61347-1, EN 61347-2-13, EN 62384, EN 61547
 Ambient Temp Range -20° - +50°

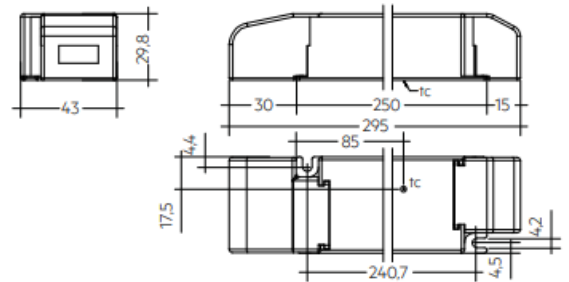
CBXL-PSU60



100w

Power 100w (Max Load)
 Drive Current 2.5A
 Output Voltage 24v (Constant Voltage)
 Power factor 0.95
 Lifetime 50,000hrs @ TC Max 75°
 Standards EN 55015, EN 61000-3-2, EN 61000-3-3, EN 61347-1, EN 61347-2-13, EN 62384, EN 61547
 Ambient Temp Range -20° - +50°

CBXL-PSU100



200w

Power 200w (Max Load)
 Drive Current 4.1A
 Output Voltage 24v (Constant Voltage)
 Power factor 0.95
 Lifetime 50,000hrs @ TC Max 75°
 Standards EN 55015, EN 61000-3-2, EN 61000-3-3, EN 61347-1, EN 61347-2-13, EN 62384, EN 61547
 Ambient Temp Range -20° - +50°

CBXL-PSU200

